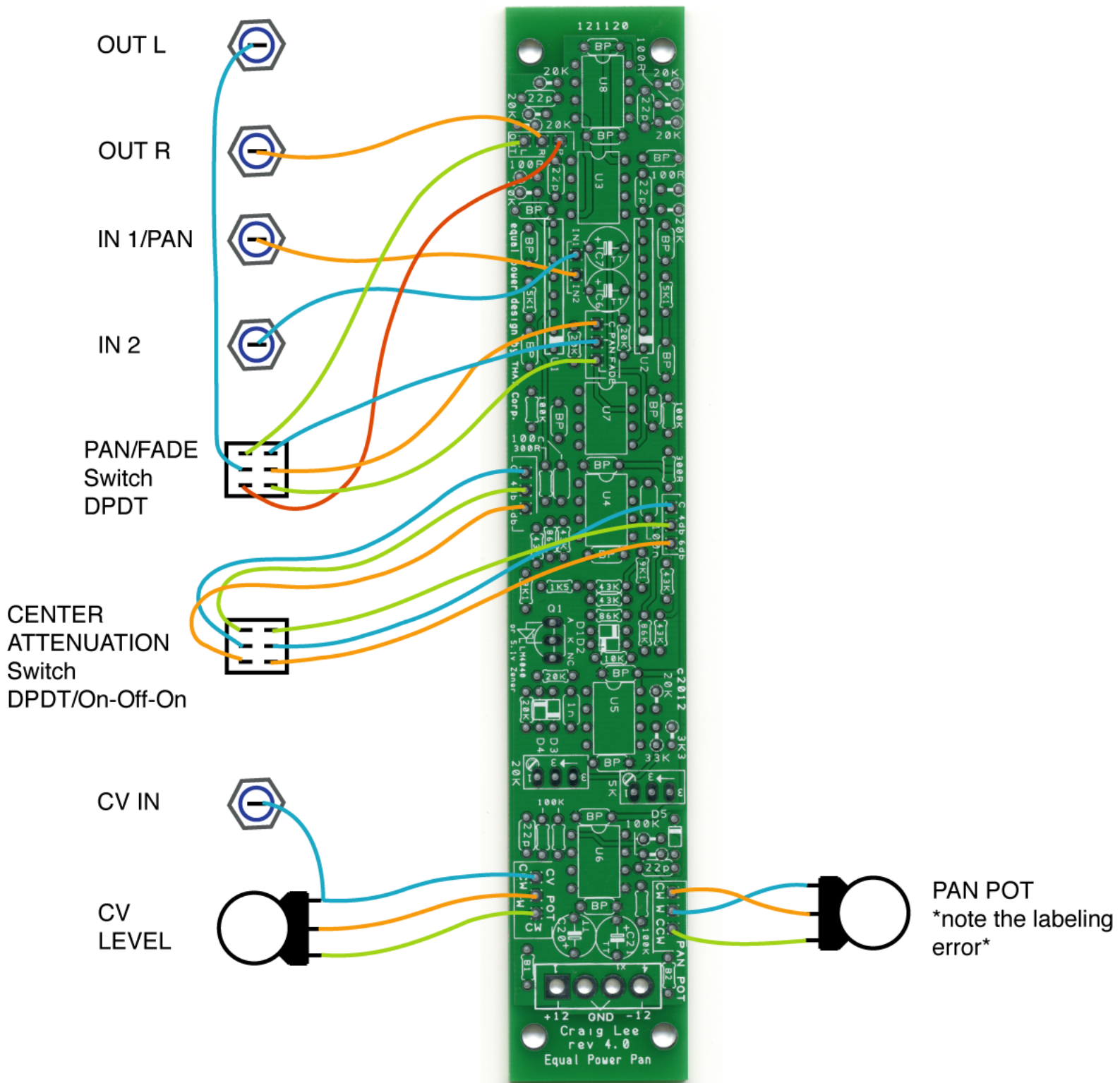
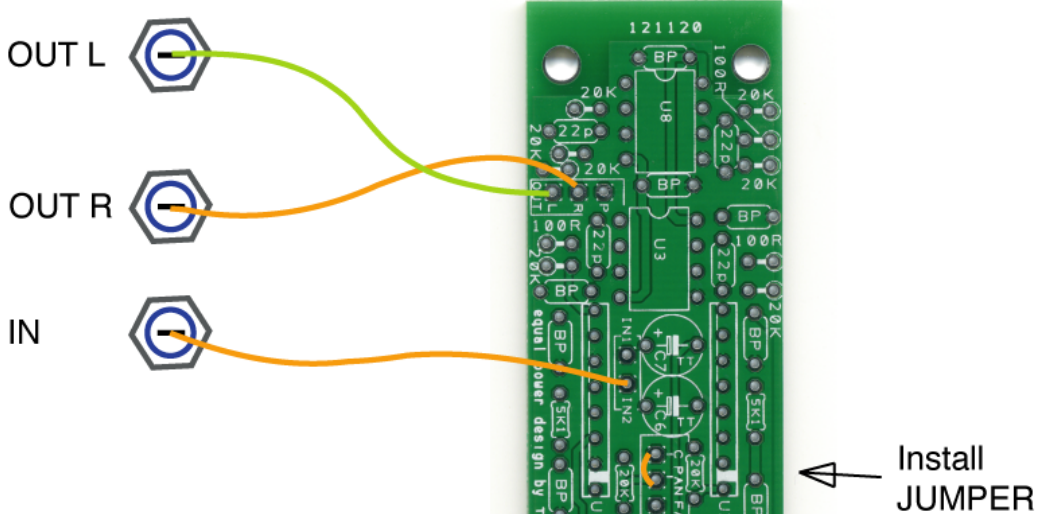


Craig Lee -Equal Power Panner board  
Full connection.



### Components viewed from the back

# Craig Lee -Equal Power Panner board PAN only connection.



CENTER  
ATTENUATION  
Switch  
DPDT/On-Off-On

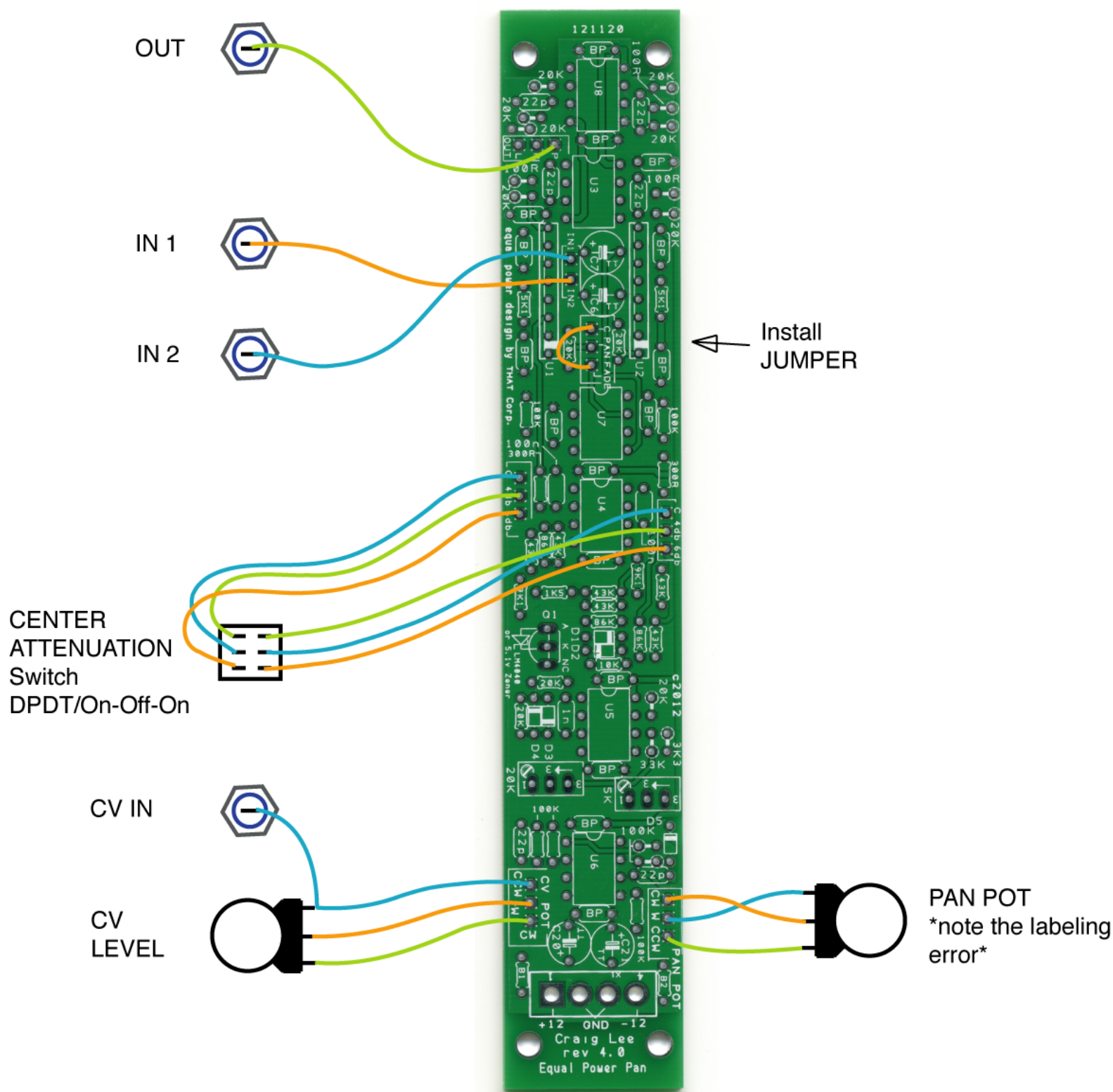
CV IN

CV  
LEVEL

PAN POT  
\*note the labeling  
error\*

Components viewed from the back

Craig Lee -Equal Power Panner board  
Cross Fade only connection.

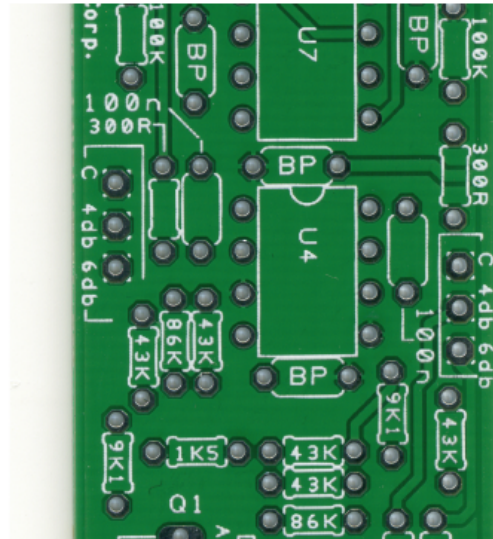


### Components viewed from the back

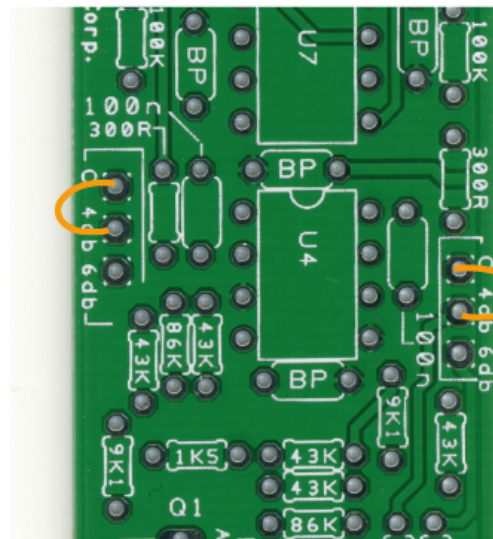


# Craig Lee -Equal Power Panner board

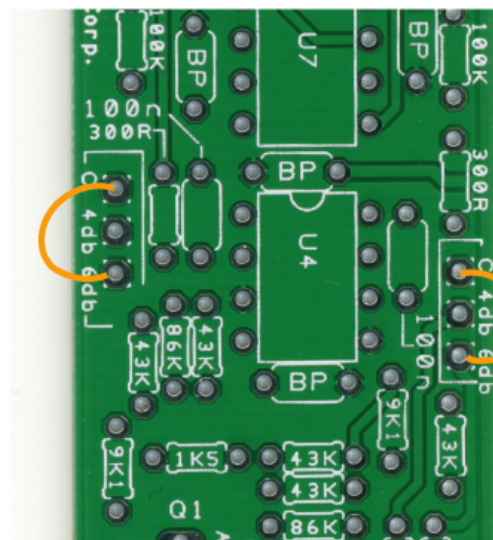
## Fixed Attenuation jumpers



-3db center  
ATTENUATION  
make no connections



-4.5 db center  
ATTENUATION



-6 db center  
ATTENUATION